

iMC2G



www.is5com.com

Industrial Gigabit Ethernet Media Converter

Features

- Converts 10/100/1000Base-TX to 1000Base-X (multi-mode/single-mode or SFP port)
- Supports Jumbo Frame up to 10240 Bytes
- Support store and forward transmission
- Relay output for power fail alarm
- IP-40 housing
- DIN-Rail or Panel Mount



Introduction

The iMC2G is an industrial grade gigabit media converter which enables conversion of 10/100/1000Base-TX to 1000Base-X. It supports an operating temperature range of -40 to +85°C, and is available with dual input DC supplies, or a single universal AC/DC supply with a low voltage DC backup supply.



IS5 COMMUNICATIONS

SERVICES • SUPPORT • SECURITY • SOLUTIONS • SYSTEMS

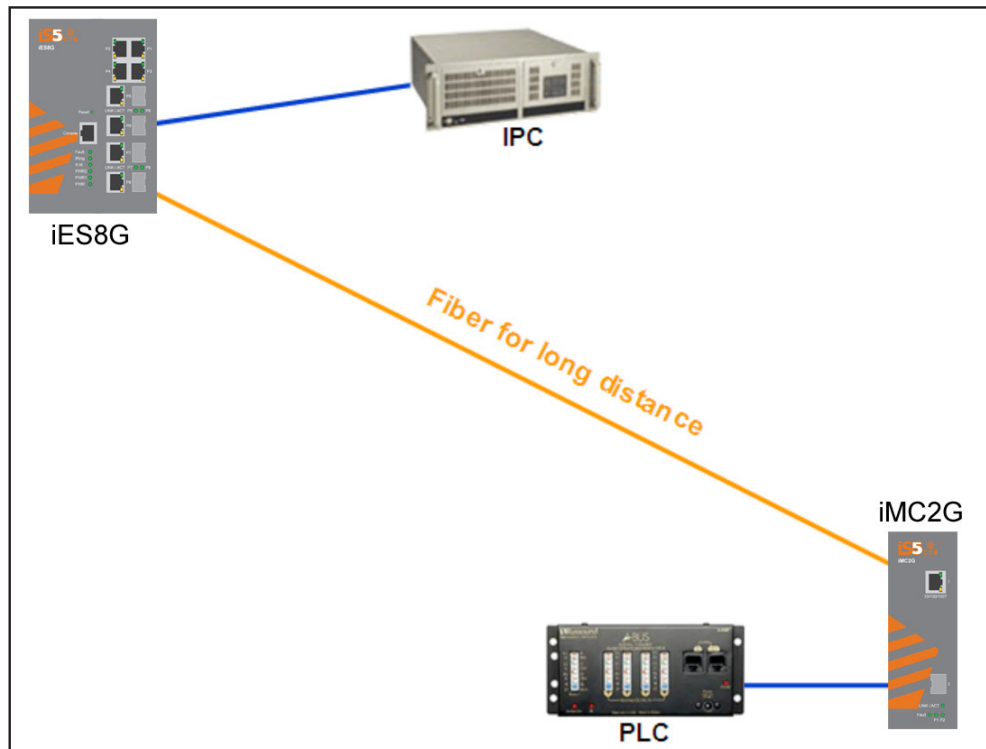
Tel: +905-670-0004

Fax: +289-401-5206

Email: info@is5com.com



#3-7490 Pacific Circle, Mississauga, Ontario, L5T 2A3



Connections of Media Converter

Specifications

Model Number		iMC2G Multimode	iMC2G Singlemode	iMC2G SFP
Physical Ports				
10/100/1000 Base-T(X) Ports in RJ45 Auto MDI/MDIX		1	1	1
Fiber Port Specification	Fiber Ports Number	1	1	-
	Fiber Ports standard	1000Base-SX	1000Base-LX	-
	Fiber Mode	Multi-mode	Single-mode	-
	Fiber Diameter (μm)	62.5/125 μm	9/125 μm	-
	Fiber Optical Connector	50/125 μm	SC/ST	-
	Typical Distance (Km)	SC/ST	10 Km	-
	Wavelength (nm)	0.55 Km	1310 nm	-
	Max. Output Optical Power (dbm)	850 nm	-3 dbm	-
	Min. Output Optical Power (dbm)	-4 dbm	-9.5 dbm	-
	Max. Input Optical Power (Saturation)	-9.5 dbm	-3 dbm	-
	Min. Input Optical Power (Sensitivity)	0 dbm	-20 dbm	-
Link Budget (db)	-18 dbm	10.5 db	-	
1000Base-X SFP port		8.5 db	-	1

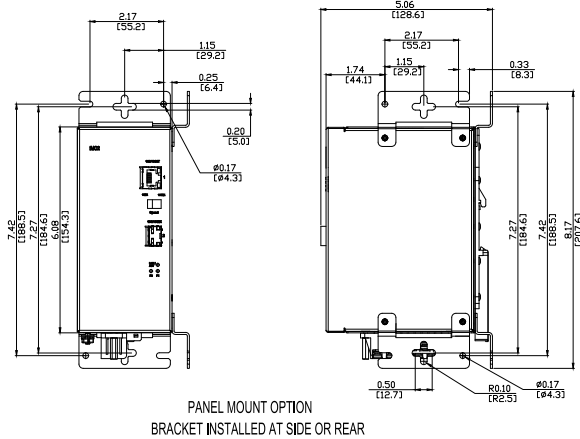
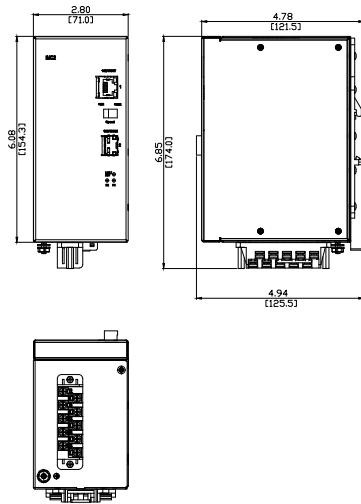


Technology	
Ethernet Standards	IEEE 802.3 for 10Base-T IEEE 802.3u for 100Base-TX IEEE 802.3ab for 1000Base-T IEEE 802.3z for 1000Base-X
Jumbo Frame	10240 Bytes
LED indicators	
Power / Ready Indicator	Green : Power LED x 2
Fault Indicator	Amber : Indicate power failure
10/100/1000Base-T(X) RJ45 Port Indicator	Green for port Link/Act. Amber for 100Mbps indicator.
1000Base-X Port Indicator	Green for port Link/Act
Fault Contact	
Relay	Relay output to carry capacity of 1A at 24 VDC
Dip Switch	Relay output function enable / disable by dip switch
Power	
Input Power	LV input: 10 to 48VDC, MV input: 36-72VDC or, HV: Single input universal supply 120-370VDC or 85-264VAC with a single 10-48VDC Backup.
Power Consumption (Typ.)	3.5 Watts
Overload Current Protection	Present
Reverse Polarity Protection	Present on terminal block
Physical Characteristic	
Enclosure	IP-40
Dimension (W x D x H)	52 (W) x 106.1 (D) x 144.3 (H) mm (2.05 x 4.18 x 5.68 inch)
Weight (g)	400g
Environmental	
Storage Temperature	-40 to 85°C (-40 to 185°F)
Operating Temperature	-40 to 85°C (-40 to 185°F)
Operating Humidity	5% to 95% Non-condensing
Regulatory approvals	
EMI	FCC Part 15, CISPR (EN55022) class A
EMS	EN61000-4-2 (ESD), EN61000-4-3 (RS), EN61000-4-4 (EFT), EN61000-4-5 (Surge), EN61000-4-6 (CS), EN61000-4-8, EN61000-4-11
Shock	IEC60068-2-27
Free Fall	IEC60068-2-32
Vibration	IEC60068-2-6
Safety	EN60950-1
Warranty	
Warranty	5 Years



Dimensions

All Dimensions are in Inches



Ordering Information

Base	Power Supply	Mount	Ethernet Port 1	Ethernet Port 2	Description
iMC2G	LV	D	1RJ45	1SSC10	
iMC2G					Core assembly and packaging
	LV				Dual Input (10-48VDC)
	MV				Dual Input (36-72VDC)
	HV				Single Input 120-370VDC or 85-264VAC with Single 10-48VDC Backup
		D			DIN Rail Mounting
		P			Panel Mounting
		N			No Mounting Hardware
			1RJ45		10/100/1000Base TX RJ45
				1MSC05	100FX Multimode SC, 850nm, 500m
				1MST05	100FX Multimode ST, 850nm, 500m
				1SSC10	100FX Singlemode SC, 1310nm, 10km
				1SST10	100FX Singlemode ST, 1310nm, 10km
				1SSC25	100FX Singlemode SC, 1310nm, 25km
				1SST25	100FX Singlemode SC, 1310nm, 25km
				1SFP**	100X SFP (Blank no optical transceiver)

Example order code: iMC2G-LV-D-1RJ45-1SSC10-C1
 Description: Gigabit Media Converter, Power Supply: Dual Input (10-48VDC), DIN Rail Mount, 1x10/100Base T(X), 1x100Base-F(X) Singlemode SC, 10Km port, Conformal Coating

C1=Add for conformal coating



**SFP's to be ordered separately.

SFP Module #	Description
SFP100-MM-2	SFP 100Mbps Multimode LC Transceiver 2km, 1310nm, -40C - +85C
SFP100-SM-30	SFP 100Mbps Singlemode LC Transceiver 30km, 1310nm, -40C - +85C
SFP100-SM-60	SFP 100Mbps Singlemode LC Transceiver 60km, 1310nm, -40C - +85C
SFP100-SM-100	SFP 100Mbps Singlemode LC Transceiver 100km, 1550nm, -40C - +85C
SFP100-SM-120	SFP 100Mbps Singlemode LC Transceiver 120km, 1550nm, -40C - +85C
SFP100BIDI1-SM-20	SFP 100Mbps Bi-Directional Singlemode LC Transceiver 20km, TX1310 nm, RX1550nm, -40C - +85C
SFP100BIDI2-SM-20	SFP 100Mbps Bi-Directional Singlemode LC Transceiver 20km, TX1550 nm, RX1310nm, -40C - +85C
SFP100BIDI1-SM-40	SFP 100Mbps Bi-Directional Singlemode LC Transceiver 40km, TX1310 nm, RX1550nm, -40C - +85C
SFP100BIDI2-SM-40	SFP 100Mbps Bi-Directional Singlemode LC Transceiver 40km, TX1550 nm, RX1310nm, -40C - +85C
SFP100BIDI1-SM-60	SFP 100Mbps Bi-Directional Singlemode LC Transceiver 60km, TX1310 nm, RX1550nm, -40C - +85C
SFP100BIDI2-SM-60	SFP 100Mbps Bi-Directional Singlemode LC Transceiver 60km, TX1550 nm, RX1310nm, -40C - +85C
SFP1000-MM-550	SFP 1Gbps Multimode LC Transceiver 500m, 850nm, -20C - +85C
SFP1000-MM-2	SFP 1Gbps Multimode LC Transceiver 2km, 1310nm, -40C - +85C
SFP1000-SM-10	SFP 1Gbps Singlemode LC Transceiver 10km, 1310nm, -40C - +85C
SFP1000-SM-20	SFP 1Gbps Singlemode LC Transceiver 20km, 1310nm, -40C - +85C
SFP1000-SM-30	SFP 1Gbps Singlemode LC Transceiver 30km, 1310nm, -40C - +85C
SFP1000-SM-40	SFP 1Gbps Singlemode LC Transceiver 40km, 1310nm, -40C - +85C
SFP1000-SM-50	SFP 1Gbps Singlemode LC Transceiver 50km, 1550nm, -40C - +85C
SFP1000-SM-70	SFP 1Gbps Singlemode LC Transceiver 70km, 1550nm, -40C - +85C
SFP1000-SM-8-	SFP 1Gbps Singlemode LC Transceiver 80km, 1550nm, -40C - +85C
SFP1000BIDI1-SM-10	SFP 1Gbps Bi-Directional Singlemode LC Transceiver 10km, TX1310 nm, RX1550nm, -40C - +85C
SFP1000BIDI2-SM-10	SFP 1Gbps Bi-Directional Singlemode LC Transceiver 10km, TX1550 nm, RX1310nm, -40C - +85C
SFP1000BIDI1-SM-20	SFP 1Gbps Bi-Directional Singlemode LC Transceiver 20km, TX1310 nm, RX1550nm, -40C - +85C
SFP1000BIDI2-SM-20	SFP 1Gbps Bi-Directional Singlemode LC Transceiver 20km, TX1550 nm, RX1310nm, -40C - +85C
SFP1000BIDI1-SM-40	SFP 1Gbps Bi-Directional Singlemode LC Transceiver 40km, TX1310 nm, RX1550nm, -40C - +85C
SFP1000BIDI2-SM-40	SFP 1Gbps Bi-Directional Singlemode LC Transceiver 40km, TX1550 nm, RX1310nm, -40C - +85C
SFP1000BIDI1-SM-60	SFP 1Gbps Bi-Directional Singlemode LC Transceiver 60km, TX1310 nm, RX1550nm, -40C - +85C
SFP1000BIDI2-SM-60	SFP 1Gbps Bi-Directional Singlemode LC Transceiver 60km, TX1550 nm, RX1310nm, -40C - +85C
SFP1000BIDI1-SM-80	SFP 1Gbps Bi-Directional Singlemode LC Transceiver 80km, TX1310 nm, RX1550nm, -40C - +85C
SFP1000BIDI2-SM-80	SFP 1Gbps Bi-Directional Singlemode LC Transceiver 80km, TX1550 nm, RX1310nm, -40C - +85C