



Intelligent 6 Port Device Server

Features

- Redundant Dual Ethernet Ports: Recovery time < 10ms
- Ethernet Switch Mode: Allows daisy chaining of multiple device servers
- NAT-pass through: User can manage IDS6 through NAT router
- Redundant Power Inputs
- Redundant multiple host devices: 5 simultaneous in Virtual COM, TCP Server, TCP Client mode, UDP
- Secure Management by HTTPS and SSH
- Serial Server Modes: Virtual Com, Serial Tunnel, TCP Server, TCP Client, UDP
- Event alarms via Syslog, Email, SNMP trap, and Beeper
- Supported operating systems: Windows NT/2000/ XP/2003/VISTA
- Ethernet switch mode allows daisy chaining
- Redundant facility to stream data to 5 host devices
- Event alarms sent via e-mail
- Secure management via HTTPS & SSH protocol
- NAT router pass through
- IP security table to prevent unauthorized access
- Configurable by Web-browser and Windows utility
- 1KV isolation for PoE PD port of IDS6



**128
BIT
ENCRYPTION**



iS5 COMMUNICATIONS

SERVICES • SUPPORT • SECURITY • SOLUTIONS • SYSTEMS

Tel: +905-670-0004

Fax: +289-401-5206

Email: info@is5com.com



#3-7490 Pacific Circle, Mississauga, Ontario, L5T 2A3



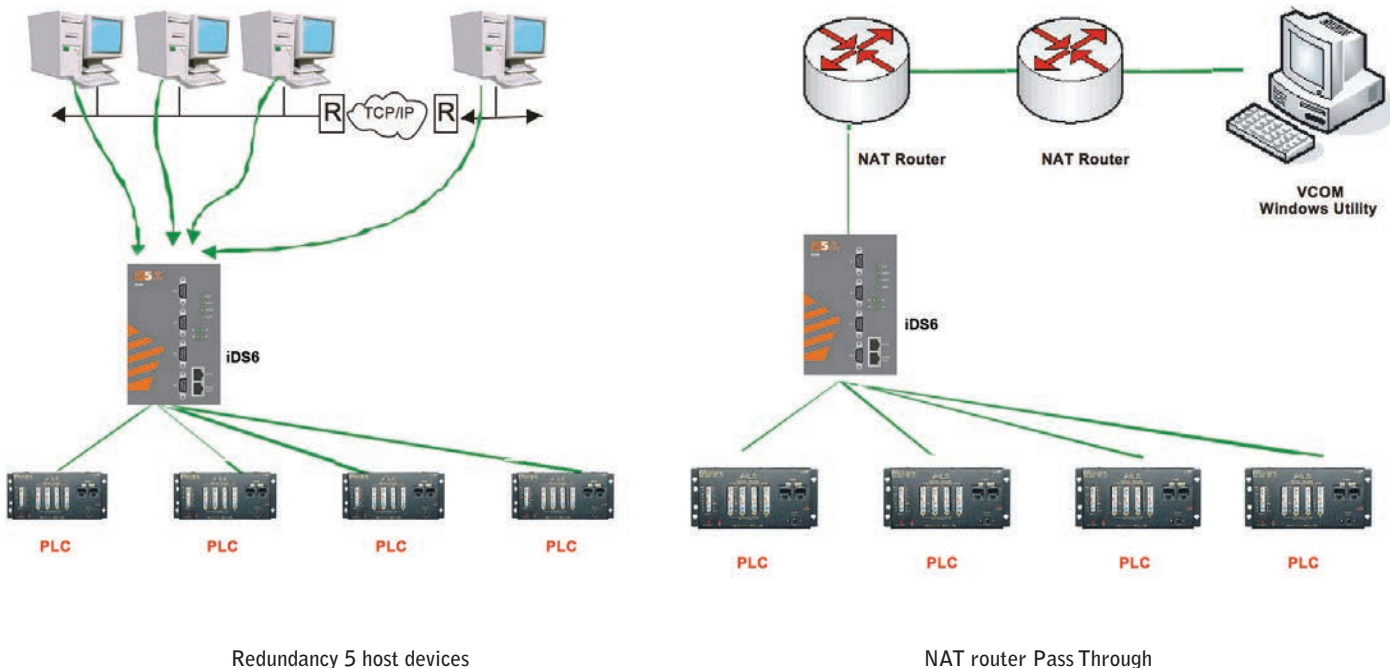
Introduction

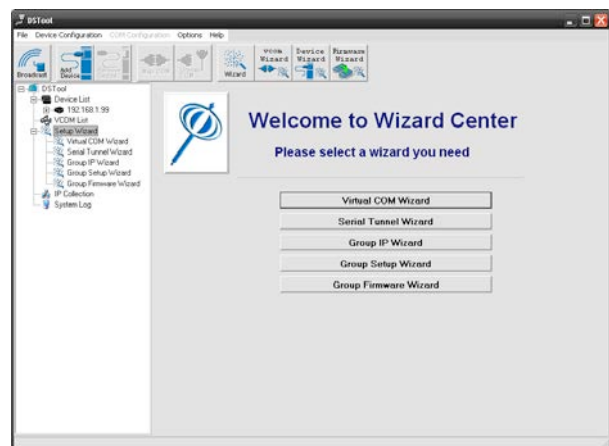
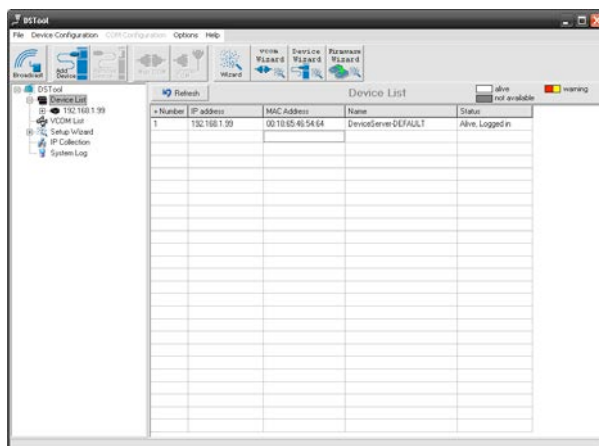
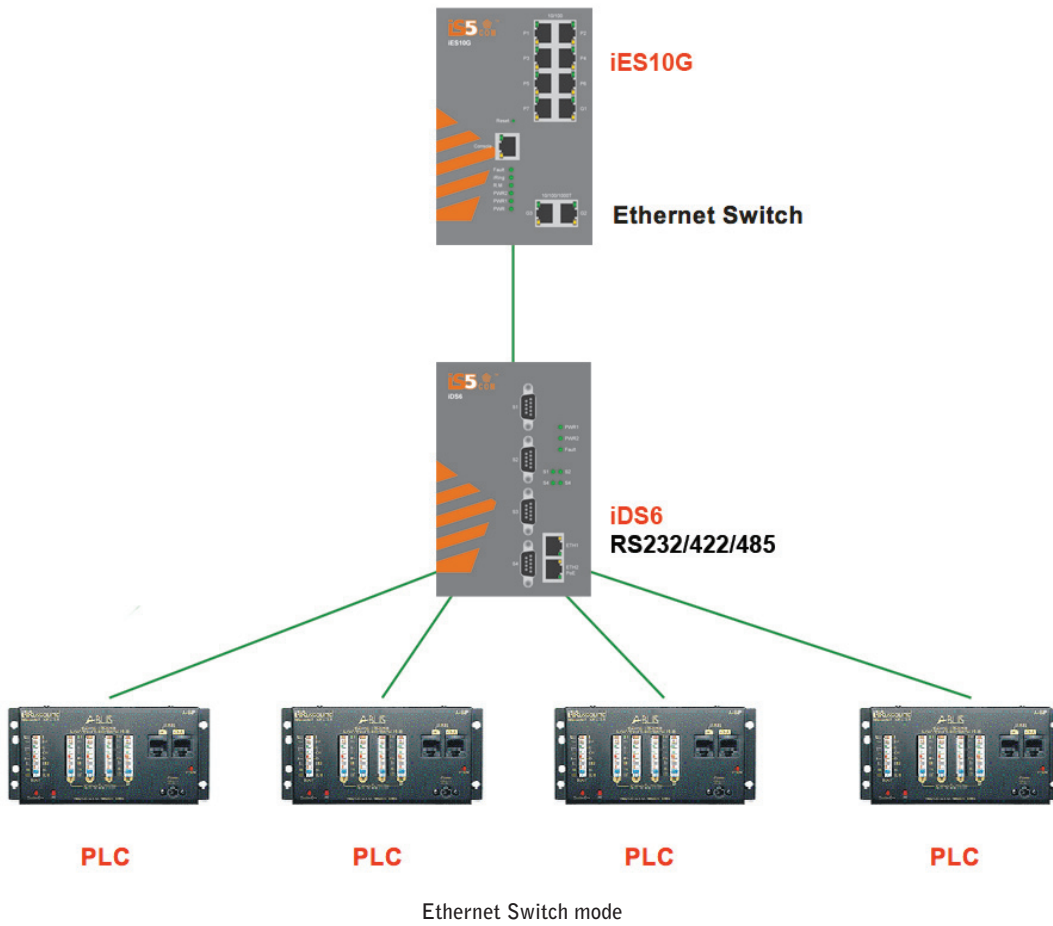
iDS6 is a serial device server with 4 ports of serial RS232/422/485 to 2 redundant LAN ports. To ensure integrity and security of critical data, iDS6 offers many powerful redundancy features. The first feature provides protection against failure of an Ethernet LAN port, by automatically switching to another LAN port within 10ms to guarantee delivery via an alternative path.

iDS6 also supports an Ethernet switch mode allowing users to daisy chain several serial servers reducing the usage of Ethernet switch ports. Another redundancy feature in the iDS6 is the simultaneous transfer of data of up to 5 host PCs. This feature ensures that critical data is sent via alternative Ethernet paths and to multiple host PC's ensuring data is not compromised by the Ethernet connections or potential host PC failure. With NAT pass through functionality, users are able to manage the iDS6 inside or outside the NAT router, making it easy for different IP domain users to use the iDS6. The secondary Ethernet port of the iDS6 supports PoE IEEE 802.3af allowing the device to be powered via the Ethernet cable instead of a separate power supply.

Configuration

The iManage Software Suite utility can be used to configure the serial device server. This convenient utility allows easy management and monitoring facilities of all servers on the network.





Windows Configuration Utility



Specifications

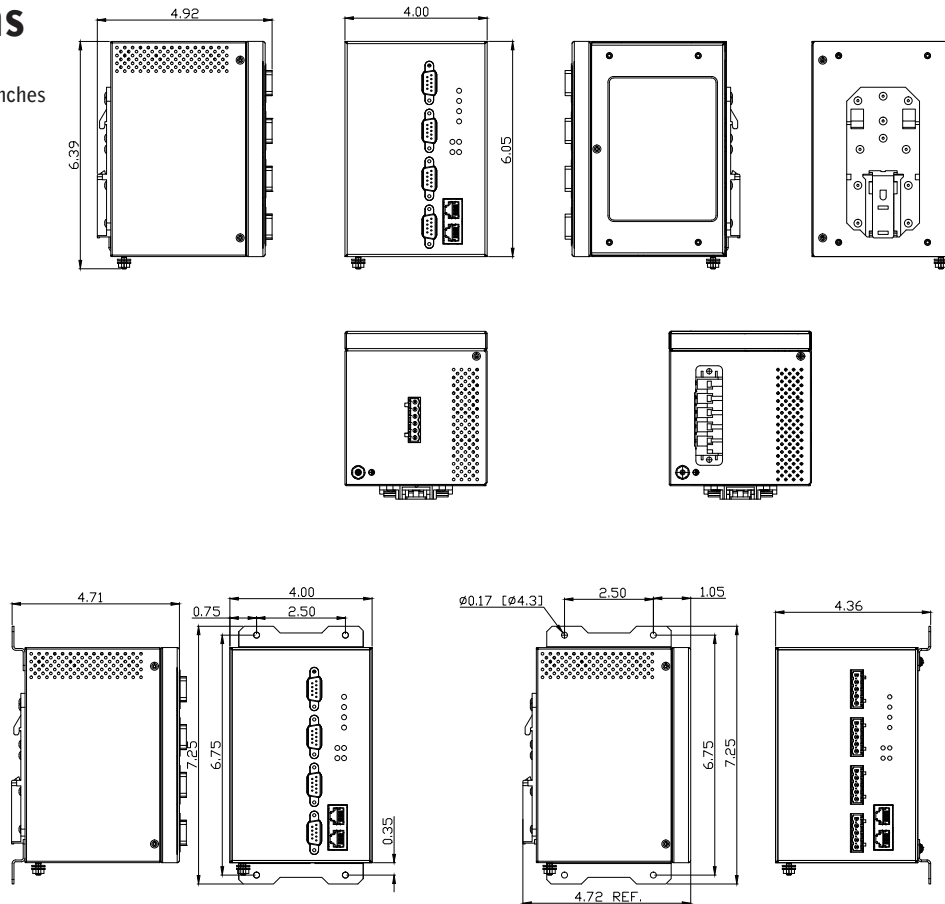
Model Number iDS6	
Physical Ports	
10/100 Base-T(X) Ports in RJ45 Auto MDI/MDIX	2
P.O.E. Feature	P.O.E.Present on ETH2 Power Device (IEEE 802.3af): IEEE 802.3af compliant input interface, Power consumption: 8Watts max., Over load & short circuit protection, Isolation Voltage: 1000 VDC min., Isolation Resistance : 108 ohms min
Serial Ports	
Connector	DB9 x 4
Operation Mode	RS232 / RS422 / 4(2)-Wire RS485. Which can be configured by the windows configuraton utility
Serial Baud Rate	110 bps to 460.8 Kbps
Data Bits	5, 6, 7, 8
Parity	odd, even, none, mark, space
Stop Bits	1, 1.5, 2
RS-232	TxD, RxD, RTS, CTS, DTR, DSR, DCD, RI, GND
RS-422	Tx+,Tx-, Rx+, Rx-,GND
RS-485 (4-wire)	Tx+,Tx-, Rx+, Rx-,GND
RS-485 (2-wire)	Data+, Data-,GND
Flow Control	XON/XOFF, RTS/CTS, DTR/DSR
LED Indicators	
Power indicator	PWR 1(2) / Ready:
10/100TX RJ45 port indicator	Red On: Power is on and booting up.
Serial TX / RX LEDs:	Red Blinking: Indicates an IP conflict, or DHCP or BOOTP server did not respond properly.
Power	
Redundant Input power	Dual DC inputs 10 to 48VDC, Dual DC Inputs 36-72VDC, or Single input universal supply 120-370VDC or 85-264VAC with a single 10-48VDC Backup
Power consumption (Typ.)	5.5 Watts
Overload current protection	Present
Reverse polarity protection	Internal
Physical Characteristic	
Enclosure	IP-40 Galvanized Steel Housing
Dimension (W x D x H)	52(W)x106.1(D)x144.3(H) mm (2.05x4.18x5.68 inch.)
Weight (g)	678 g



Environmental	
Storage Temperature	-40 to 85°C (-40 to 185°F)
Operating Temperature	-40 to 85°C (-40 to 185°F)
Operating Humidity	5% to 95% Non-condensing
Regulatory Approvals	
EMI	FCC Part 15, CISPR (EN55022) class A
EMS	EN61000-4-2 (ESD), EN61000-4-3 (RS), EN61000-4-4 (EFT), EN61000-4-5 (Surge), EN61000-4-6 (CS), EN61000-4-8, EN61000-4-11
Shock	IEC60068-2-27
Free Fall	IEC60068-2-32
Vibration	IEC60068-2-6
Safety	EN60950
Warranty	
Warranty	5 Years

Dimensions

All Dimensions are in Inches



PANEL MOUNT
BRACKET INSTALLED AT REAR
SHOWN iDS6

PANEL MOUNT
BRACKET INSTALLED AT SIDE
SHOWN iDS6P



Ordering Information

Base	Power Supply	Mount	Ethernet Port 1-2	Serial Ports 3-6	Description
iDS6	LV	D	2RJ45	4DB09	
iDS6					Core assembly and packaging
	LV				Dual Input (10-48VDC)
	MV				Dual Input (36-72VDC)
	HV				Single Input 88-370VDC or 85-264VAC with Single 10-48VDC Backup
		D			DIN Rail Mounting
		P			Panel Mounting
		N			No Mounting Hardware
			2RJ45		10/100Base TX RJ45
				4DB09	4 x RS232/422/485 DB9 Ports

Example order code: iDS6-LV-D-1RJ45-1RJ45-4DB09-C1-F3.07

Description: Device Server, Power Supply: Dual Input (10-48VDC), DIN Rail Mount, 2x10/100base-T(X) ports, 4xRS232/422/485 DB9 ports, Conformal Coating, Firmware Revision 3.07

C1=Add for conformal coating

FW=Leave blank for latest revision